



Joinery Options:

BioPro

CARCASE OPTIONS

13mm thick Sheet size 3600 x 1800mm



DOOR, DRAWER FRONTS & PANEL OPTIONS

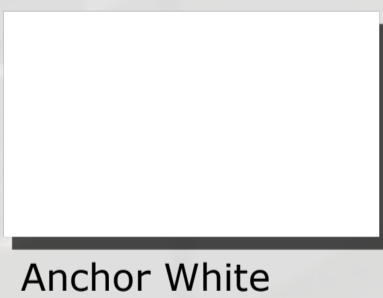
13mm thick Sheet size 3600 x 1800mm



novalab**tek**

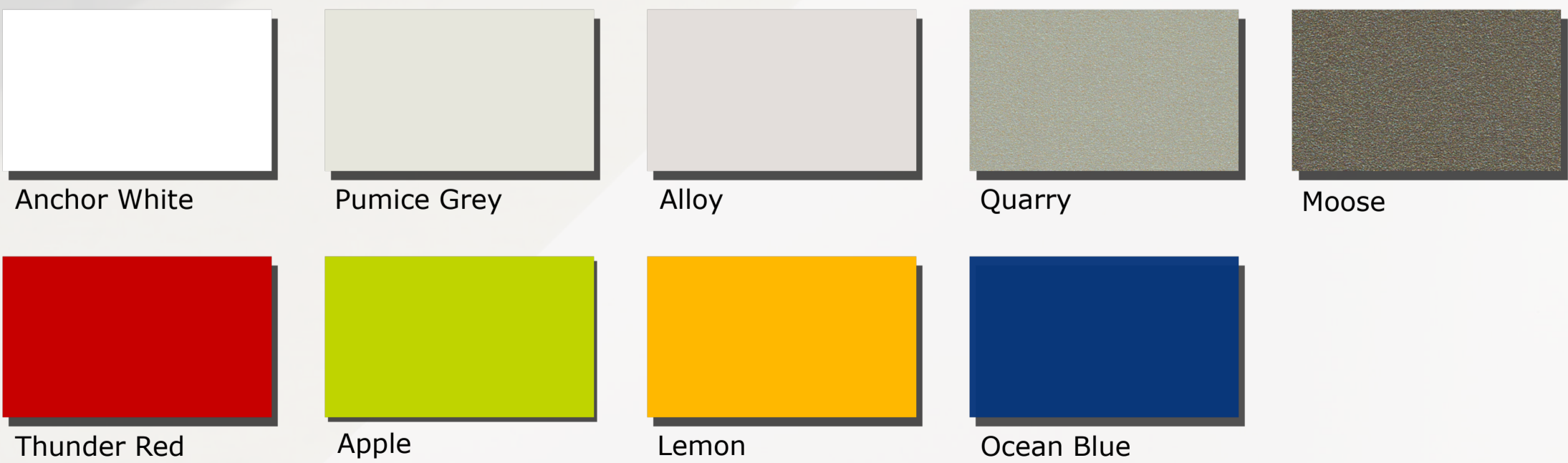
CARCASE OPTIONS

13mm thick Sheet size 2850 x 2100mm



DOOR, DRAWER FRONTS & PANEL OPTIONS

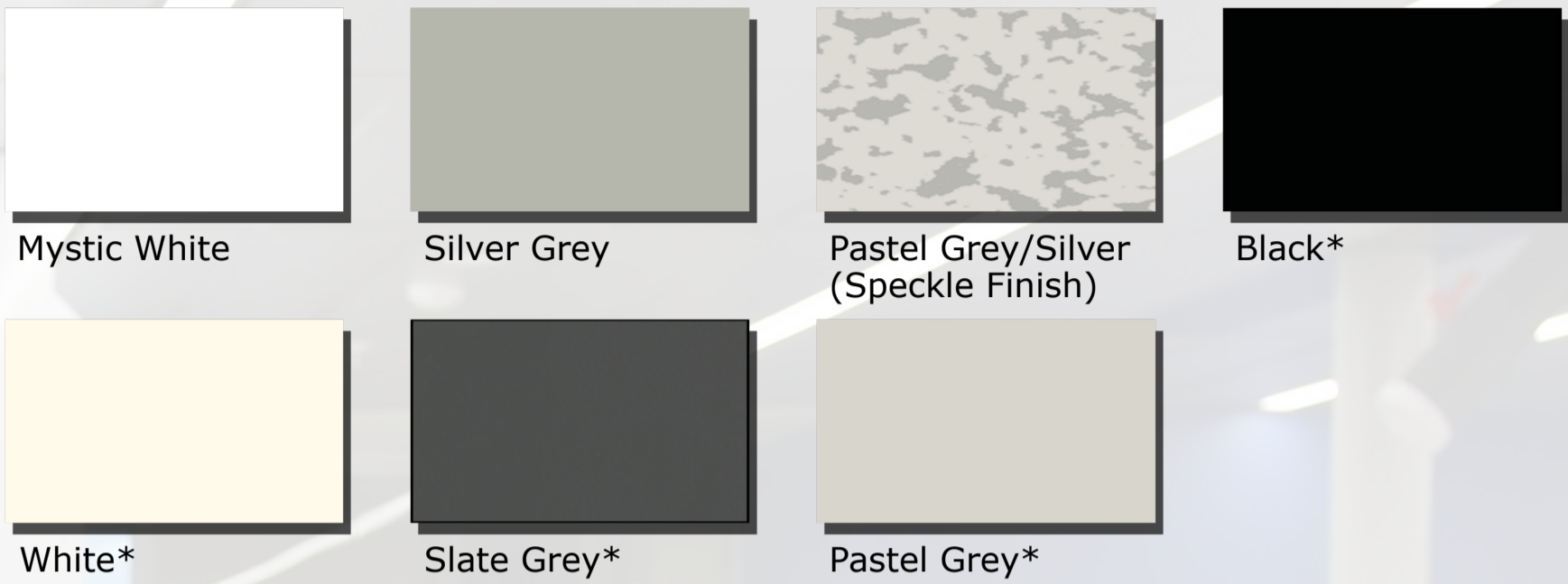
13mm thick Sheet size 2850 x 2100mm



Benchtop Options:

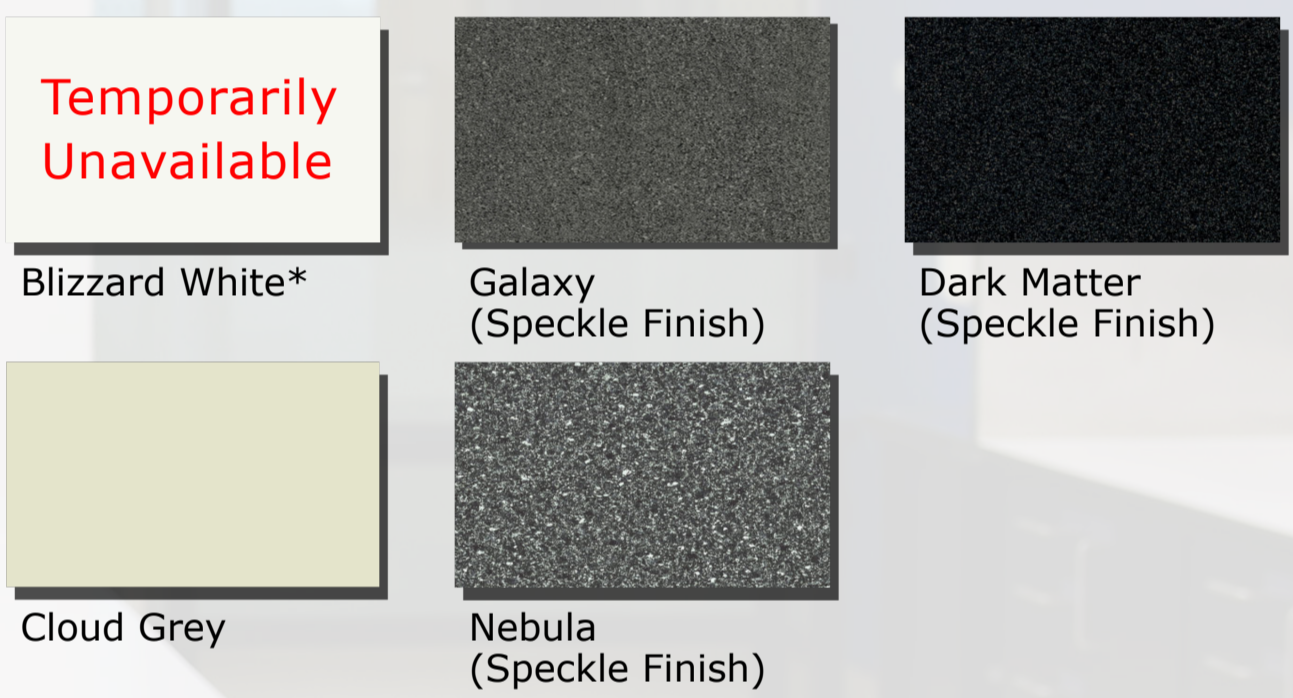
TRESPA®

16mm thick Sheet size 3000 x 1500mm



QUANTUM**EBC**

16mm thick Sheet size 3600 x 1500mm



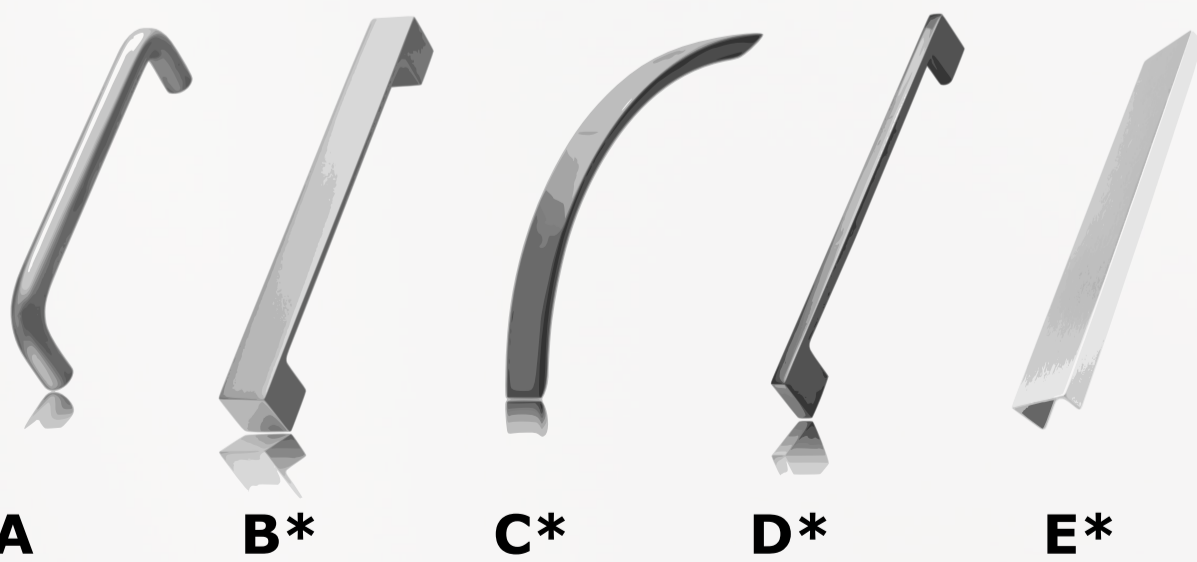
DURA**TOP**

16mm thick Sheet size 3600 x 1800mm



Cabinetry Handles:

Various sizes and finishes available.



\* = Non Standard.

Cabinetry Locks:

Standard 15.5mm diameter lock with interchangeable barrel. Various other styles available on request.

